

Opportunities and Challenges in Pupil Transportation



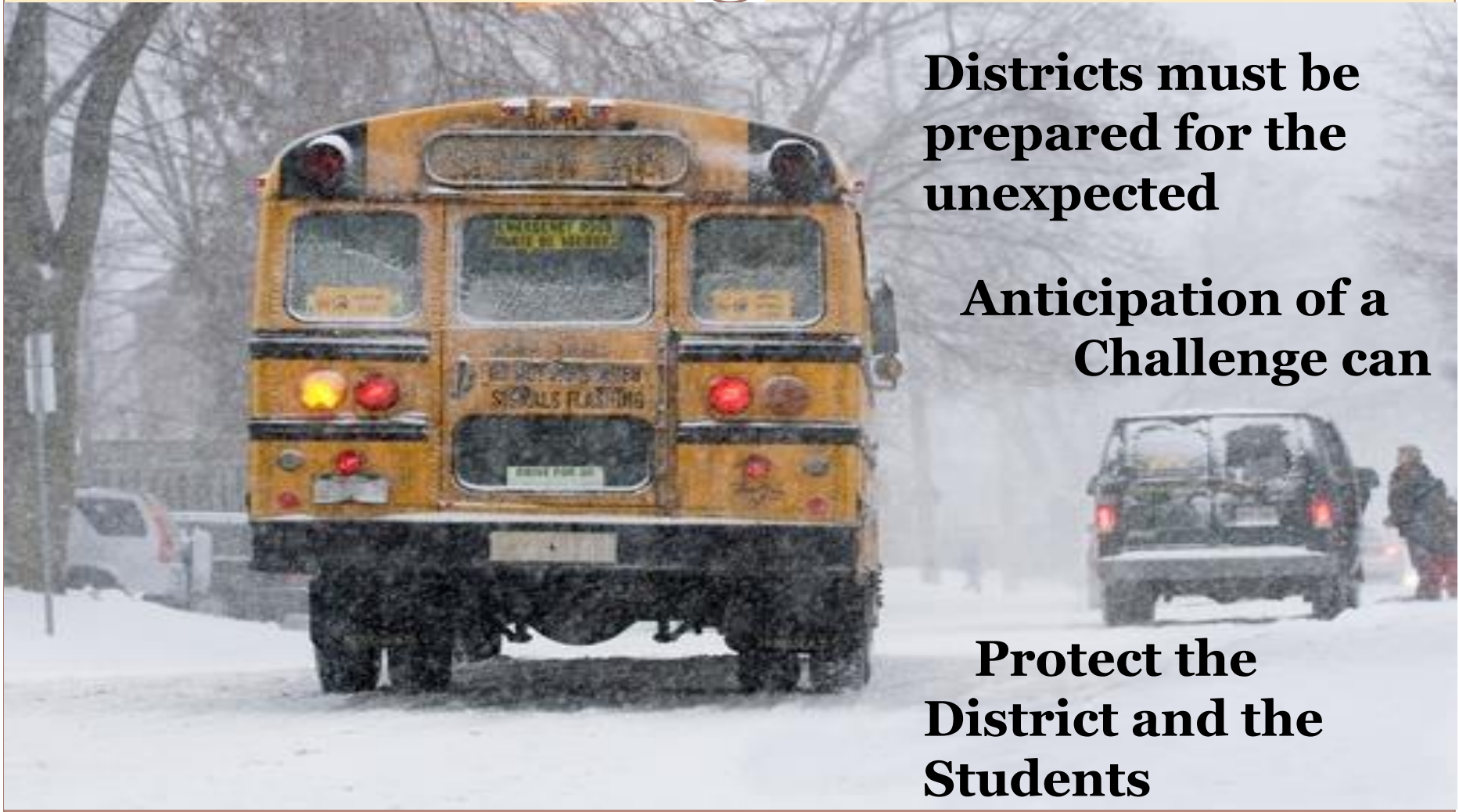
MARY FAHERTY SANSARICQ,
NYSED STATE DIRECTOR OF PUPIL
TRANSPORTATION
AND
KATHLEEN FURNEAUX
EXECUTIVE DIRECTOR OF PTSI

Nassau-Suffolk Joint Chapter Meeting
April 26, 2017



Challenges in Pupil Transportation

2



Districts must be prepared for the unexpected

Anticipation of a Challenge can

Protect the District and the Students

Contractors and Record Compliance

3



- School Districts are responsible
- We recommend that school districts understand and review the compliance files for all their drivers, monitors, and attendants:
 - Personnel/District File
 - SED Safety Training File
 - 19A File
- Superintendent's (Supervisor's) School's Approval is required by law

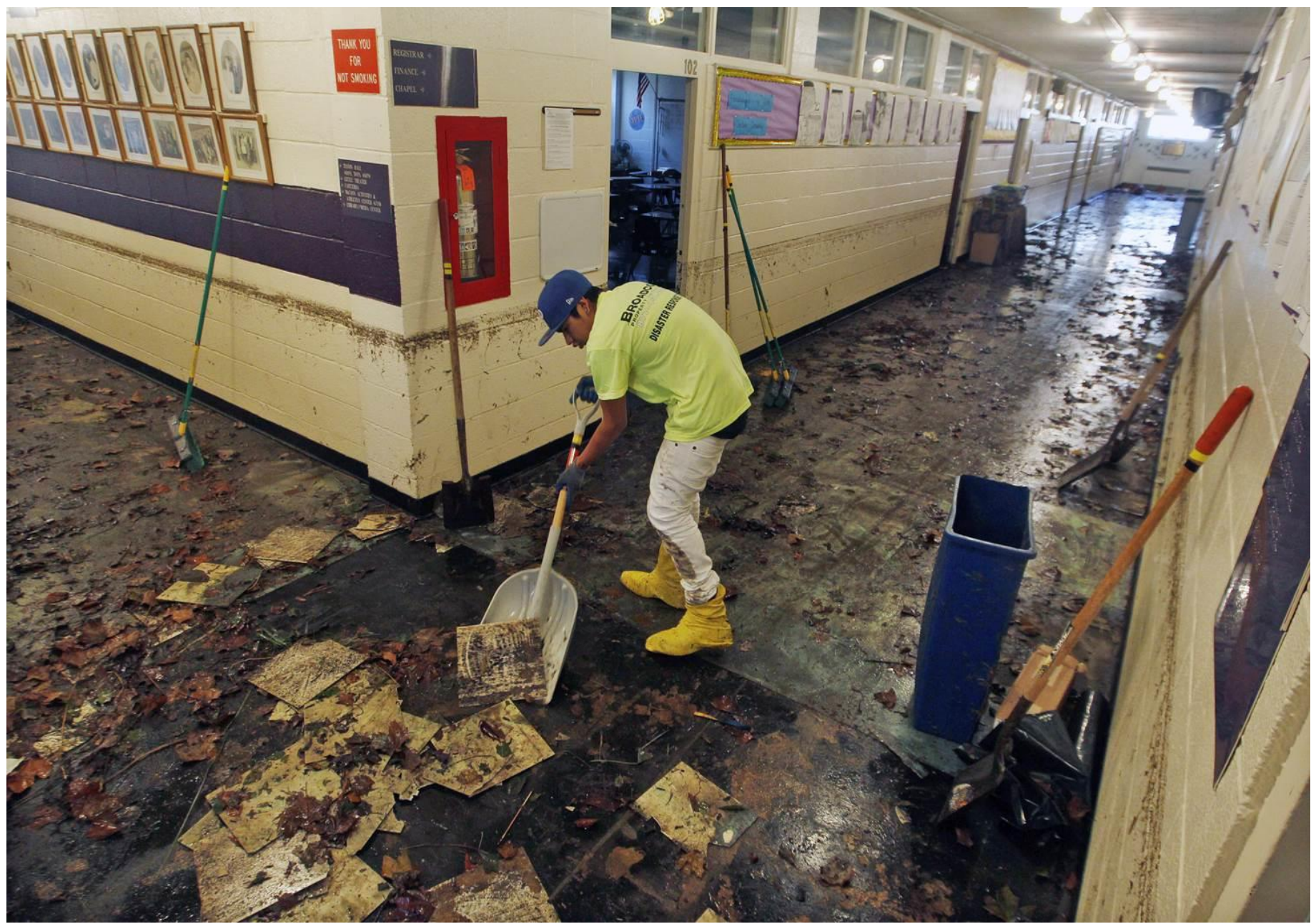
Where Are The Records?

4



- Why are they not in one place?
- The Trans office needs to be monitoring them.
- Protected in fire/water-proof file cabinet





Personnel File

6

- Local District policies, and requirements
- Have there been any awards, recognitions, issues, complaints?
- Fingerprint clearance
- Physical exam - annual
- Superintendent's approval



SED Training File

7



- PPT
- Annual Physical
- Pre service
- Basic course
- Annual Refreshers
- Annual Dignity Act Training
- Anti-Idling Policy sign off

Dignity Act Training

8



- All school Bus Drivers, Attendants and Monitors must have Dignity Act Training annually
- Districts must submit an annual report of all incidents of discrimination and/or harassment that occur on school property
- Documentation of speaker, date, time, sign-in sheet must be on file

Anti-Idling Policy

9

- School District must have Anti-Idling Policy
- Policy must be communicated to Drivers within 5 days of the start of school
- Includes ALL vehicles, owned or leased, not just buses
- A copy of the policy
- A copy of the communication sent to drivers, dated, with clear expectations must be in the file



Semi-Annual Monitoring

10

- A school representative must monitor driver compliance (that means each file) in NYS.
- SED recommends September and January each year
- Document review, with date, by whom and the outcome of the review.



Required Records



11

- ☑ Superintendent's (Supervisor's) Approval SED Regulation 8 NYCRR 156.3 b1
- ☑ Current Physical (less than 13 months) SED Regulation 8 NYCRR 156.3 b3ii
- ☑ 3 Personal References SED Regulation 8 NYCRR 156.3 b6
- ☑ Physical Performance Test (every 2 years) SED Regulation 8 NYCRR 156.3 b3iii
- ☑ CDL with P and S endorsement SED Regulation 8 NYCRR 156.3 b4
- ☑ Fingerprints SED Regulation 8 NYCRR 87.4 and 87.2 hl
- ☑ Basic SED Approved course SED Regulation 8 NYCRR 156.3 c5iii
- ☑ Advanced SED Approved curriculum (recommended not required)
- ☑ Pre-service including PJ's Law 3-4 hour SED Approved curriculum SED Regulation 8 NYCRR 156.3 b5i and PJ's Law Ed Law Part 5 §3650(2)
- ☑ Refresher – two hours/twice a year SED Regulation 8 NYCRR 156.3 b5iii
- ☑ Student Safety Drills – 3 a year Ed Law 3623; SED Regulation 8 NYCRR 156.3f-g
- ☑ CPR Training SED Regulation 8 NYCRR 156.3c4
- ☑ The Dignity Act §100.2(jj) of the Commissioner's Regulation
- ☑ Anti-idling policy SED Regulation 156.3(h)
- ☑ Periodic Monitoring SED Regulation 8 NYCRR 156.3 f5

More Challenges

12

- Nonpublic school & Charter School
- Foster Care under ESSA
- Homeless – McKinney Vento
- Preschool Transportation
- New medical issues
- Driver Shortages
- More stops, more routes, more special requests...





Nonpublic & Charter Schools

13

- For purposes of transportation a Charter School is considered a Nonpublic School.
- 15 miles eligibility from home to School
- Parents must apply by April 1st of preceding year
- “Centralized Pickup Points” and “Transfer Points”
- Limit “Late Bus” or After School Services, but must provide to all students “in like circumstance”
- May not transport before first day of public school

Attendants and Monitors

14

- Yes, there is a Major Difference
 - Attendants are aidable
- They are an ancillary service on an IEP
- Monitors are there for the whole bus
- Active vs Passive ?



Foster Care Transportation

15



- New Foster Care Provisions in ESSA
- Districts must develop and implement clear written procedures for how Transportation is provided and funded
- If there's additional costs the District will provide the Transportation if:
 - ➔ The LDSS (Local Department of Social Service) agrees to reimburse the District
 - ➔ The District agrees to pay the cost
 - ➔ The District & LDSS agree to share the cost



Homeless Transportation

16

A homeless child is defined as a child who lacks a fixed, regular, and adequate nighttime residence.

- Guaranteed by the McKinney Vento Homeless Assistance Act
- Up to 50 miles one way
- Responsibility of the home district the child resided in prior to homelessness
- Responsibility of DSS if the child was placed in emergency housing
- Districts should bring the Trans Professional to the table to help inform the conversation

Preschool Transportation

17

Things to Consider

- Developmental Characteristics:
 - Physical
 - Cognitive
 - Emotional
- Managing Behaviors
- Child Safety Restraint System
- Loading and Unloading
- Emergencies and Evacuations
- Stock Rotation & Cleaning



Developmental & Characteristic Concerns

18



- Small in stature
- Unpredictable
- Hearing, vision and comprehension
- Communication skills limited
- Not conscious of danger

Managing Preschool Behaviors

19

➤ Teaching Safe Ridership

- Set simple rules
- verbally reinforce rules repeatedly
- Calm, soft voice and tone

➤ Make sure students are comfortable

- Change seats if needed

➤ Address issues immediately

- The little ones don't realize the dangers of the bus

➤ Provide reassurance

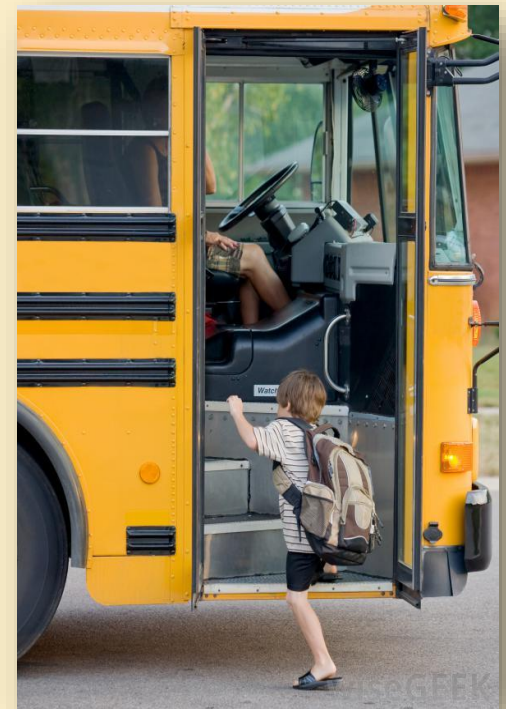
- Be comforting
- Follow up with teacher and parent



Loading and Unloading Preschoolers

20

- Monitors and attendants should get off the bus to receive and assist each child from the parent
- Child cannot step high enough up/down the steps
- Monitor should secure child in Child Safety Restraint Seat
- Precise seating plan for easy loading/unloading
- Specific and detailed evacuation planning



Child Safety Restraints

21

- Federally approved CSRS (Child Safety Restraint System) requirement
- Must fit child's age, weight, and height
- Must fit the design of the bus
- Follow manufacturer installation
- Must be secured properly to the seat
- Position toward the front of bus for quick access
- Carefully monitor maintenance with inspections
- Emergency Evacuation Planning



STAR Seat Secured
To Bus Seat



Integrated School
Bus Seat

Evacuations

22

Young riders learn through repetition - repeat the evacuation directives frequently throughout the school year...



In this next video you will see...

Evacuations

23



Realistically One Minute...

- Create a specific and detailed evacuation plan.
- Driver and Monitor should have specific roles.
- What exit(s) will be used?
- Unbuckle or cut the straps?
- How do you maintain children's safety outside the bus?
- Evacuation child in the car seat?

Emergency Epinephrine Use

24

- New Law 2015
- Must administer
in the event of an
emergency
- Schools can have epi
pens on site
- Employees must be
trained
by DOH
approved course



Driver Shortages – Critical Levels

25

- Nationwide Issue – 90% of Districts face Driver Shortages (School Bus Fleet, November 2016, p 32)
- Causes...
 - Difficult Training,
 - Annual Re-Certs,
 - Physical Needs (PPT),
 - Early Hours,
 - High Level of Responsibility
 - Difficult Behavior Management
 - Others?



Economical Practices

26

- Multiple tripping of buses reduces the number of buses needed
- Full utilization of buses by designing routes so that the buses are full
- Efficient location of bus stops can reduce the time of the route, and limit safety hazards
- Frequent stops are costly and more dangerous



Avoid EXTRAS: unsettled stops, playdates, daycare

Thank You!

27

Mary F. Sansaricq

Pupil Trans Website:

<http://www.p12.nysed.gov/schoolbus/>

Email: mary.sansaricq@nysed.gov

Phone: 518-473-2833

Kathy Furneaux

PTSI Website:

<http://www.ptsj.org/>

Email: kathy@ptsj.org

Phone: 800-836-2210

